



Drafting II All Models & Sizes

Specification Sheet





The Drafting II is a complete, ruggedized multitouch table available with 43", 49", 55", or 65" displays. There is also a 55" option for an optically bonded display. It features a fixed, ergonomically angled display, and industry-leading TES/3M touch technology with support for 80 simultaneous touch points, and an LG commercial 4K Ultra HD monitor rated for 24/7 operation. The Drafting II is equipped with a powerful integrated Intel™ Core processor, the latest NVIDIA™ discrete graphics card, and push-button power.

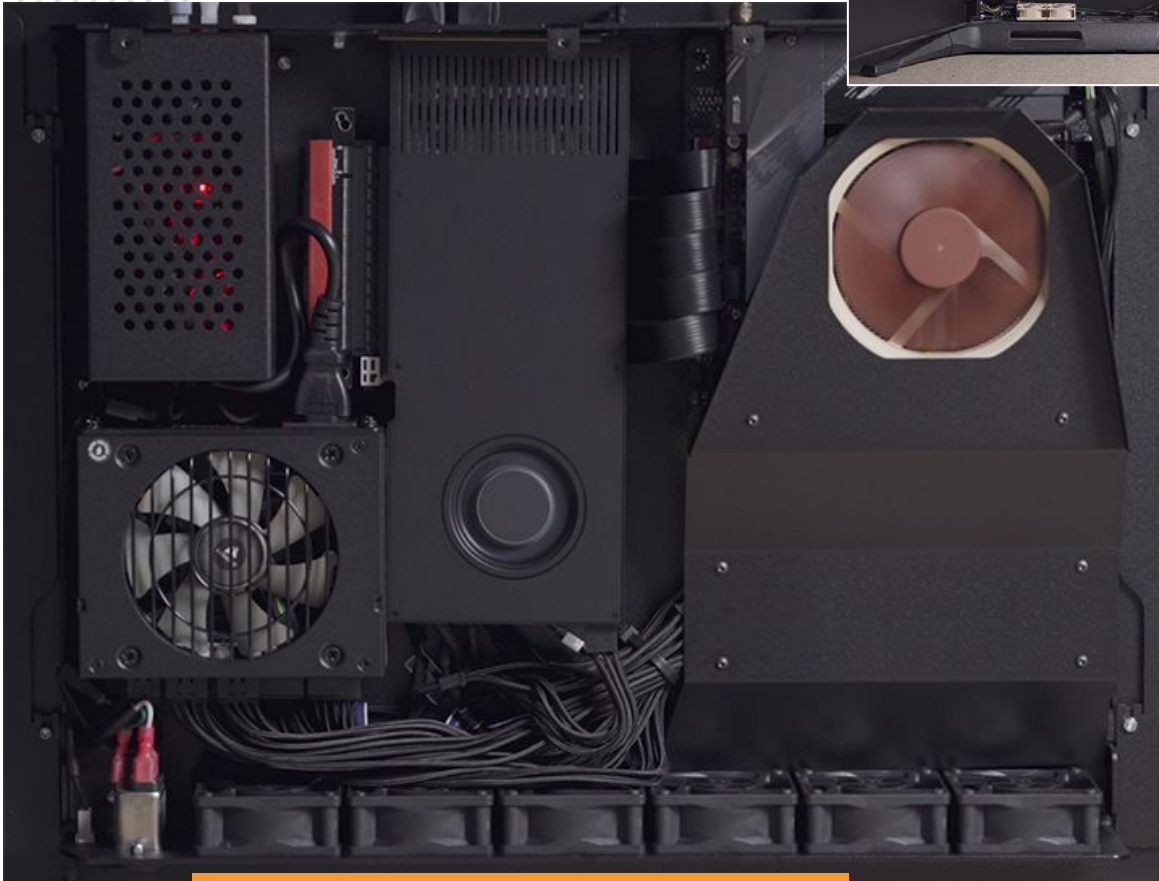
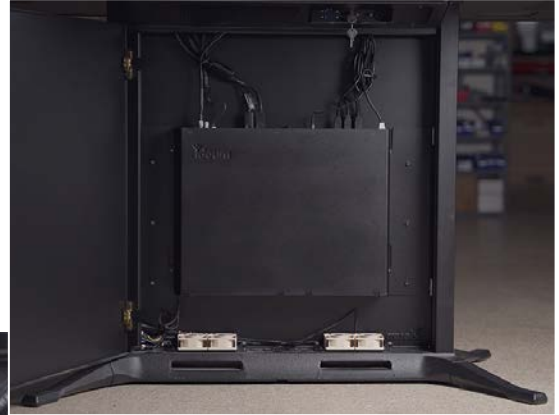


The Drafting II touch table comes standard with Windows 11 Pro and can run any supported PC applications. The Drafting II can also be purchased with an AOPEN Commercial Chromebox 3 rated for 24/7 use. This table is often used as kiosk in public settings or with AEC (architecture engineering & construction) applications. The Drafting II multitouch table is constructed from aircraft-grade aluminum and covered with a durable powder coat.

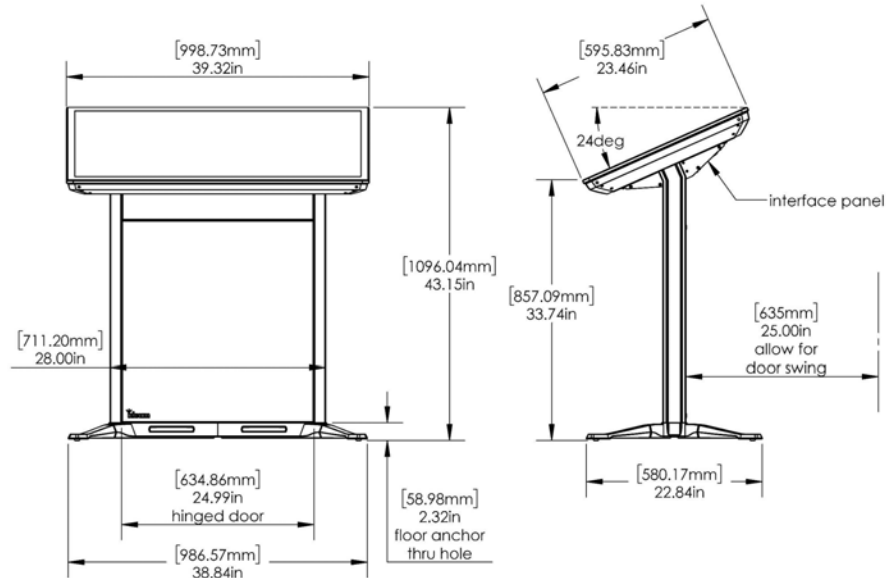
Drafting II

Specification Sheet

The thin profile computer case inside the pedestal base allows for a full-sized graphics card, and the enclosure makes the unit incredibly quiet. The all-aluminum construction and additional fans provide additional active cooling in a modular design. *(The photo below shows the internal components.)*



Ideum displays use a patented manufacturing method. The Drafting II is built in the USA and ships as a complete turnkey system with lockable, push-button operation. It doesn't require a technician or any special installation setup—just plug it in and turn it on. All of Ideum's hardware is backed by a three-year warranty.



WEIGHT
145 LBS
66 KG

SHIP WEIGHT
280 LBS
127 KG

WITH TRAVEL CASE
385 LBS
175 KG

Interactive Display

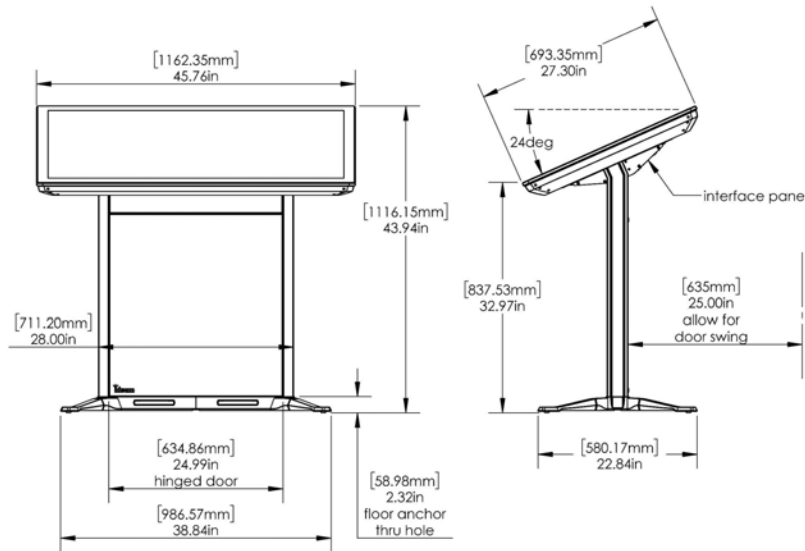
- › 4K UHD (3840x2160) LG commercial display rated 24/7
- › 43" diagonal, strengthened, anti-stiction, 4mm glass surface
- › TES /3M™ projected capacitive touch sensor
- › ±5 ms touch response time
- › 80 touch points with palm rejection
- › Native contrast ratio 1100:1
- › 500 nits luminance

Integrated System

	STANDARD	PERFORMANCE	ULTIMATE
› Push-button power			
› Lockable enclosure			
› Windows 11 Professional	› Intel 15th Gen Core Ultra 5 245K processor	› Intel 15th Gen Core Ultra 7 265K processor	› Intel 15th Gen Core Ultra 9 285K processor
› Universal 110-240V power system	› NVIDIA RTX A2000 Ada Generation 16GB graphics card	› NVIDIA RTX 4000 Ada Generation 20GB graphics card	› NVIDIA GeForce RTX 5090 32GB graphics card
› (2) 10W Integrated speakers	› 500GB M.2 NVMe SSD	› Dual 500GB M.2 NVMe SSD	› 2TB M.2 NVMe SSD
	› 16GB DDR5 RAM	› 32GB DDR5 RAM	› 64GB DDR5 RAM

Connectivity

- › TPM/TPP compatible for secure environments
- › Wi-Fi 802.11 a/b/g/n/ac, Ethernet, Bluetooth 5.0
- › Wireless keyboard with integrated trackpad
- › Direct access via USB ports
- › Audio output via 1/8" audio jack
- › HDMI output (PC)
- › RFID (optional)
- › Communication hardware can be removed upon request for secure environments



WEIGHT
155 LBS
71 KG

SHIP WEIGHT
320 LBS
146 KG

WITH TRAVEL CASE
390 LBS
177 KG

Interactive Display

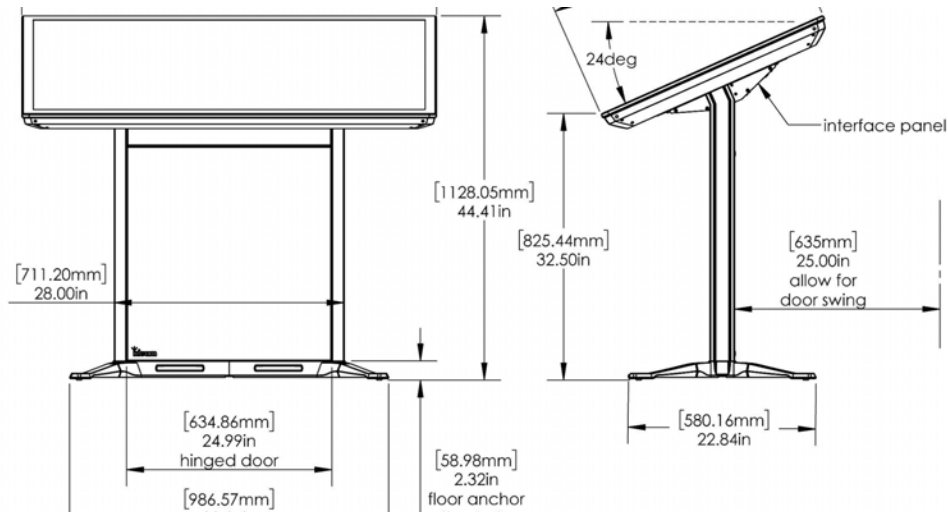
- › 4K UHD (3840x2160) LG commercial display rated 24/7
- › 49" diagonal, strengthened, anti-stiction, 4mm glass surface
- › TES /3M™ projected capacitive touch sensor
- › ±5 ms touch response time
- › 80 touch points with palm rejection
- › Native contrast ratio 1100:1
- › 500 nits luminance

Integrated System

	STANDARD	PERFORMANCE	ULTIMATE
› Push-button power			
› Lockable enclosure			
› Windows 11 Professional	› Intel 15th Gen Core Ultra 5 245K processor	› Intel 15th Gen Core Ultra 7 265K processor	› Intel 15th Gen Core Ultra 9 285K processor
› Universal 110-240V power system	› NVIDIA RTX A2000 Ada Generation 16GB graphics card	› NVIDIA RTX 4000 Ada Generation 20GB graphics card	› NVIDIA GeForce RTX 5090 32GB graphics card
› (2) 10W Integrated speakers	› 500GB M.2 NVMe SSD	› Dual 500GB M.2 NVMe SSD	› 2TB M.2 NVMe SSD
	› 16GB DDR5 RAM	› 32GB DDR5 RAM	› 64GB DDR5 RAM

Connectivity

- › TPM/TPP compatible for secure environments
- › Wi-Fi 802.11 a/b/g/n/ac, Ethernet, Bluetooth 5.0
- › Wireless keyboard with integrated trackpad
- › Direct access via USB ports
- › Audio output via 1/8" audio jack
- › HDMI output (PC)
- › RFID (optional)
- › Communication hardware can be removed upon request for secure environments



WEIGHT
170 LBS
78 KG

SHIP WEIGHT
345 LBS
157 KG

WITH TRAVEL CASE
410 LBS
186 KG

Interactive Display

- › 4K UHD (3840x2160) LG commercial display rated 24/7
- › 55" diagonal, strengthened, anti-stiction, 4mm glass surface
- › TES /3M™ projected capacitive touch sensor
- › ±5 ms touch response time
- › 80 touch points with palm rejection
- › Native contrast ratio 1100:1
- › 500 nits luminance

Integrated System

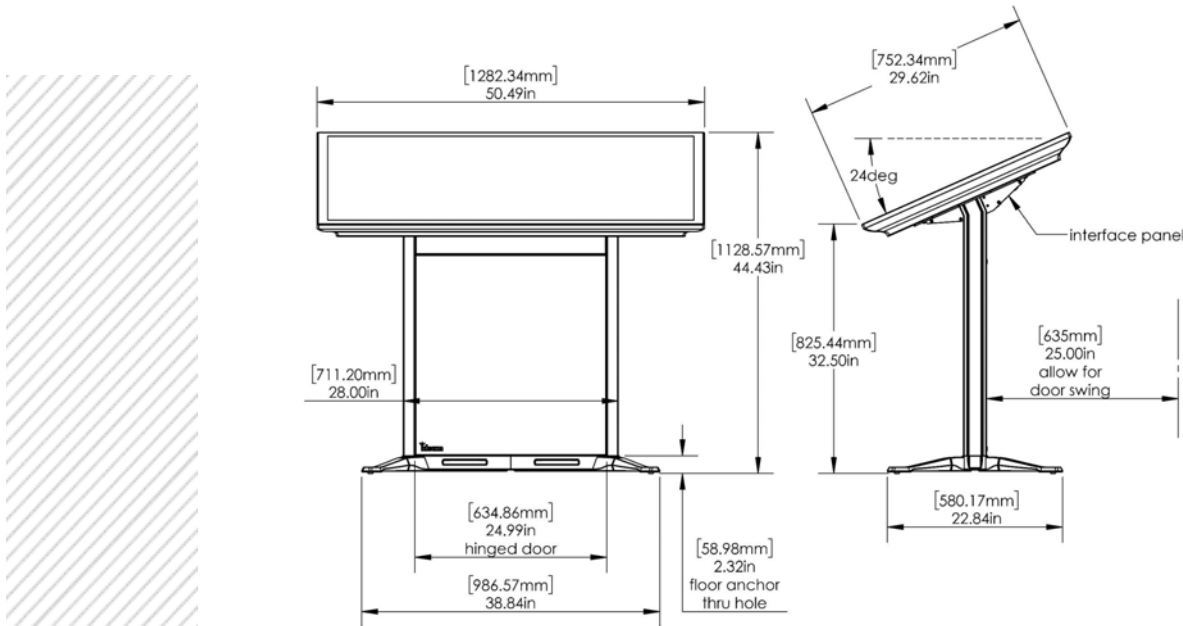
	STANDARD	PERFORMANCE	ULTIMATE
› Push-button power			
› Lockable enclosure			
› Windows 11 Professional	› Intel 15th Gen Core Ultra 5 245K processor	› Intel 15th Gen Core Ultra 7 265K processor	› Intel 15th Gen Core Ultra 9 285K processor
› Universal 110-240V power system	› NVIDIA RTX A2000 Ada Generation 16GB graphics card	› NVIDIA RTX 4000 Ada Generation 20GB graphics card	› NVIDIA GeForce RTX 5090 32GB graphics card
› (2) 10W Integrated speakers	› 500GB M.2 NVMe SSD	› Dual 500GB M.2 NVMe SSD	› 2TB M.2 NVMe SSD
	› 16GB DDR5 RAM	› 32GB DDR5 RAM	› 64GB DDR5 RAM

Connectivity

- › TPM/TPP compatible for secure environments
- › WiFi 802.11 a/b/g/n/ac, Ethernet, Bluetooth 5.0
- › Wireless keyboard with integrated trackpad
- › Direct access via USB ports
- › Audio output via 1/8" audio jack
- › HDMI output (PC)
- › RFID (optional)
- › Communication hardware can be removed upon request for secure environments

Drafting II 55" Optically Bonded

Specification Sheet



WEIGHT
175 LBS
79 KG*

SHIP WEIGHT
350 LBS
159 KG*

WITH TRAVEL CASE
415 LBS
188 KG*

Interactive Display

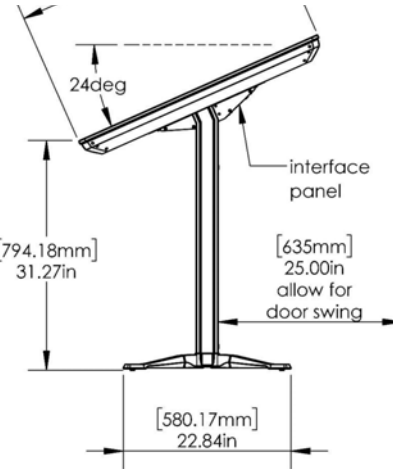
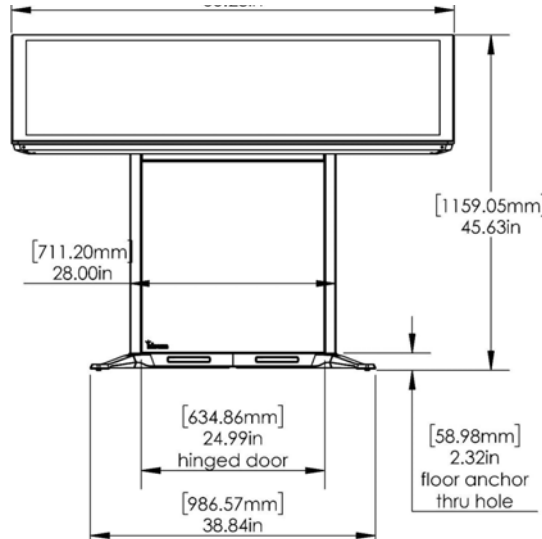
- › 4K UHD (3840x2160) LG commercial display rated 24/7
- › 55" diagonal, strengthened, anti-stiction, 4mm glass surface
- › Optically bonded sensor and LCD
- › TES /3M™ projected capacitive touch sensor
- › ±5 ms touch response time
- › 80 touch points with palm rejection
- › Native contrast ratio 1100:1
- › 500 nits luminance

Integrated System

	STANDARD	PERFORMANCE	ULTIMATE
› Push-button power			
› Lockable enclosure			
› Windows 11 Professional	› Intel 15th Gen Core Ultra 5 245K processor	› Intel 15th Gen Core Ultra 7 265K processor	› Intel 15th Gen Core Ultra 9 285K processor
› Universal 110-240V power system	› NVIDIA RTX A2000 Ada Generation 16GB graphics card	› NVIDIA RTX 4000 Ada Generation 20GB graphics card	› NVIDIA GeForce RTX 5090 32GB graphics card
› (2) 10W Integrated speakers	› 500GB M.2 NVMe SSD	› Dual 500GB M.2 NVMe SSD	› 2TB M.2 NVMe SSD
	› 16GB DDR5 RAM	› 32GB DDR5 RAM	› 64GB DDR5 RAM

Connectivity

- › TPM/TPP compatible for secure environments
- › WiFi 802.11 a/b/g/n/ac, Ethernet, Bluetooth 5.0
- › Wireless keyboard with integrated trackpad
- › Direct access via USB ports
- › Audio output via 1/8" audio jack
- › HDMI output (PC)
- › RFID (optional)
- › Communication hardware can be removed upon request for secure environments



WEIGHT
205 LBS
93 KG

SHIP WEIGHT
385 LBS
175 KG

WITH TRAVEL CASE
492 LBS
224 KG

Interactive Display

- › 4K UHD (3840x2160) LG commercial display rated 24/7
- › 65" diagonal, strengthened, anti-stiction, 4mm glass surface
- › TES /3M™ projected capacitive touch sensor
- › ±5 ms touch response time
- › 80 touch points with palm rejection
- › Native contrast ratio 1100:1
- › 500 nits luminance

Integrated System

	STANDARD	PERFORMANCE	ULTIMATE
› Push-button power			
› Lockable enclosure			
› Windows 11 Professional	› Intel 15th Gen Core Ultra 5 245K processor	› Intel 15th Gen Core Ultra 7 265K processor	› Intel 15th Gen Core Ultra 9 285K processor
› Universal 110-240V power system	› NVIDIA RTX A2000 Ada Generation 16GB graphics card	› NVIDIA RTX 4000 Ada Generation 20GB graphics card	› NVIDIA GeForce RTX 5090 32GB graphics card
› (2) 10W Integrated speakers	› 500GB M.2 NVMe SSD	› Dual 500GB M.2 NVMe SSD	› 2TB M.2 NVMe SSD
	› 16GB DDR5 RAM	› 32GB DDR5 RAM	› 64GB DDR5 RAM

Connectivity

- › TPM/TPP compatible for secure environments
- › Wi-Fi 802.11 a/b/g/n/ac, Ethernet, Bluetooth 5.0
- › Wireless keyboard with integrated trackpad
- › Direct access via USB ports
- › Audio output via 1/8" audio jack
- › HDMI output (PC)
- › RFID (optional)
- › Communication hardware can be removed upon request for secure environments

Customizations



Built-in Casters

Low profile built-in casters make it easy to move.



Adjustable Keyboard Tray

Removable keyboard and mouse tray. Includes keyboard and mouse.



Second Monitor

Multitouch 22" HD monitor with articulating mount.



AEC Bundle

Casters, Keyboard Tray, and Second Monitor.



Ultimate Upgrade

- › Intel 15th Gen Core Ultra 9 285K processor
- › NVIDIA GeForce RTX 5090 32GB graphics card
- › 2TB M.2 NVMe SSD
- › 64GB DDR5 RAM



Chromebox System

Replaces the PC with an AOPEN Chromebox Commercial 3 rated 24/7. Not available with the Optically Bonded display.



Colors and Finishes

Available in hundreds of RAL color and finish options.



ATA Flight Case

Reusable travel case with locking casters and locking latch clasps.

What's Inside

Our touch tables include the best performing, most reliable components available.

4K UHD (3840x2160)
commercial LCD
display

PCAP touch sensor
with 80 touch points
TES (3M) technology

NVIDIA™
graphics card

Intel® Core™ Processor

Aircraft-grade
aluminum made in
the USA



Software



The Drafting II touch table comes with Windows 11 Pro and supports PC applications. Applications that are optimized for touch work best.

Ideum offers custom software development. We have experience developing interactive applications, mostly for public spaces. Our expertise in a broad range of programming environments allows our work to span the realms of informal and formal education, interactive technology, art, and entertainment.

ALSO AVAILABLE



RFID Utility

Ideum multitouch products include an optional RFID utility for enhanced functionality.

Our new and improved RFID software allows you to automate system tasks, launch and switch applications, and more with a single movement. This useful utility is free for Ideum touch table owners.

Learn more at: ideum.com/news/rfid-reader-app



Drafting II

Specification Sheet

About Ideum

Ideum designs experiences for public spaces, offering exhibit design, AV, and software development services to museums, nonprofits, and socially responsible companies. We are proudly based in Corrales, New Mexico, and collaborate with creative partners worldwide.

SALES & DESIGN INQUIRIES

We sell our multitouch tables and displays directly, both in the USA and internationally. Ask us how to turn your interactive goals into amazing reality.

Use our [online inquiry form](#)

Email: sales@ideum.com

Phone: (505) 792-1110 ext. 1

WARRANTY & SUPPORT

Our products are custom-built with only the highest quality components available and are designed to last. We back all of our hardware, including custom exhibits, with a three-year warranty. The same people who design and build our systems provide our timely support.

Submit a ticket: support.ideum.com

Email: support@ideum.com

Phone: (505) 792-1110 ext. 2

Hours: 8:00 AM – 5:00 PM Mountain Time, Monday through Friday.

The Colossus, Drafting, Pano, Platform, Pico, Pro, Reader Rail, and Inline touch tables and the Portrait and Presenter touch displays from Ideum are designed, manufactured, and made in the USA of U.S. and imported parts.



Compliant with height and reach requirements for the Americans with Disabilities Act standards for accessibility. Learn more about Ideum's commitment to accessibility at www.ideum.com/ada

IMPORTANT NOTICE TO PURCHASER: Specifications are subject to change without notice. Ideum hardware and software are warrantied from the date of receipt to the period stated in the warranty. Please note that under Ideum's warranty, Ideum has no obligation for any hardware product that is modified or damaged through misuse, accident, neglect, or subsequent integration, service, or tampering, by anyone other than Ideum or an Ideum-approved entity or individual. Ideum makes no additional warranties, express or implied, including but not limited to any fitness for a particular purpose. The User is responsible for determining whether Ideum hardware products or software are fit for the User's particular purpose. If the hardware product or software are proven not to have met Ideum's warranty, then Ideum's sole obligation and User's and Purchaser's exclusive remedy will be, at Ideum's option, to repair or replace the product or refund its purchase price. Ideum shall not be liable in any action against it in any way related to the hardware products or software for any loss or damages, whether non-specified, direct, indirect, special, incidental or consequential (including downtime, loss of profits or goodwill) regardless of the legal theory asserted. Please see our full warranty for complete details.

